

## Squalicum Business Park

3560 Meridian St,  
Bellingham, WA 98225

5,916 SF (available now)

\$15/SF/YR + NNN

Dock high loading in rear

Easy Access to I-5

33,000 cars per day

Excellent Parking

Monument/Fascia Signage

<http://squalicumbusinesspark.com>



### Contact

**Greg Martineau, CCIM**  
C (360) 820-4645  
Q (360) 676-4866  
greg@saratogacom.com

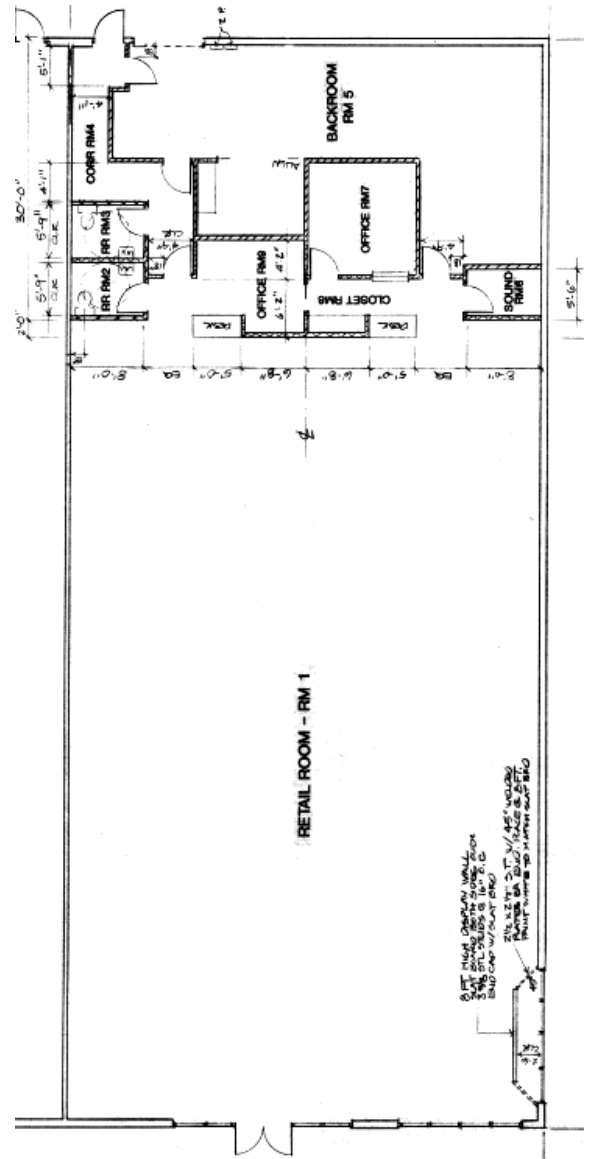


*The information contained herein has been obtained from sources we deem reliable. We do not guarantee its accuracy. All info should be verified prior to purchase or lease.*

## Squalicum Business Park

### PROPERTY FACT SHEET

<b>Address:</b>	3560 Meridian St, Bellingham
<b>Zoning:</b>	Retail, Medical, Office
<b>Traffic Counts:</b>	33,000+ cars per day
<b>Ceiling Height:</b>	16 feet
<b>Loading Dock:</b>	In rear of building
<b>Telecommunications:</b>	Wired for phone and high speed internet
<b>Demographics:</b>	Households: 1 mile: 4,235 3 miles: 27,037
<b>HVAC:</b>	Rooftop HVAC units, maintained quarterly
<b>Signage:</b>	Fascia & Monument
<b>Asphalt:</b>	Excellent condition



### Contact

**Greg Martineau, CCIM**  
 C (360) 820-4645  
 Q (360) 676-4866  
 greg@saratogacom.com





**Saratoga**  
commercial real estate

## Panoramic Photo

3560 Meridian St, Bellingham WA

