

Ideal for Medical & Dental Offices

Squalicum Business Park
3560 Meridian Street
Bellingham, WA 98225

<http://squalicumbusinesspark.com>

5,916 Square Feet.

YOUR SIGN HERE
(seen by 30,000 cars per day)

\$16 per Sq. Ft. + NNN.

Flexible Zoning.

Close to ST Joe's Hospital.

Windows can be added to the
side of the building.

Lots of Parking.

Easy Access to I-5.

Excellent Visibility:

- *30,000 cars per day
- *building fascia signage
- *monument signage

Contact

Greg Martineau, CCIM
C (360) 820-4645
O (360) 676-4866
greg@saratogacom.com



The information contained herein has been obtained from sources we deem reliable. We do not guarantee its accuracy. All info should be verified prior to purchase or lease.

Ideal for Medical & Dental Offices

PROPERTY FACT SHEET	
Web Address:	www.Squalicumbusinesspark.com
Zoning:	Retail, Medical, Office allowed
Traffic Counts:	30,000 cars per day
Ceiling Height:	16 feet (high ceilings!)
Loading Dock:	In rear of building
Telecommunications:	Phone & high speed internet
Demographics:	Households: 1 mile: 4,235 3 miles: 27,037 5 miles: 43,509
HVAC:	Rooftop HVAC units
Signage:	Fascia & Monument
Fire Suppression:	Fully Sprinklered building
NNN:	\$4.14 per SF

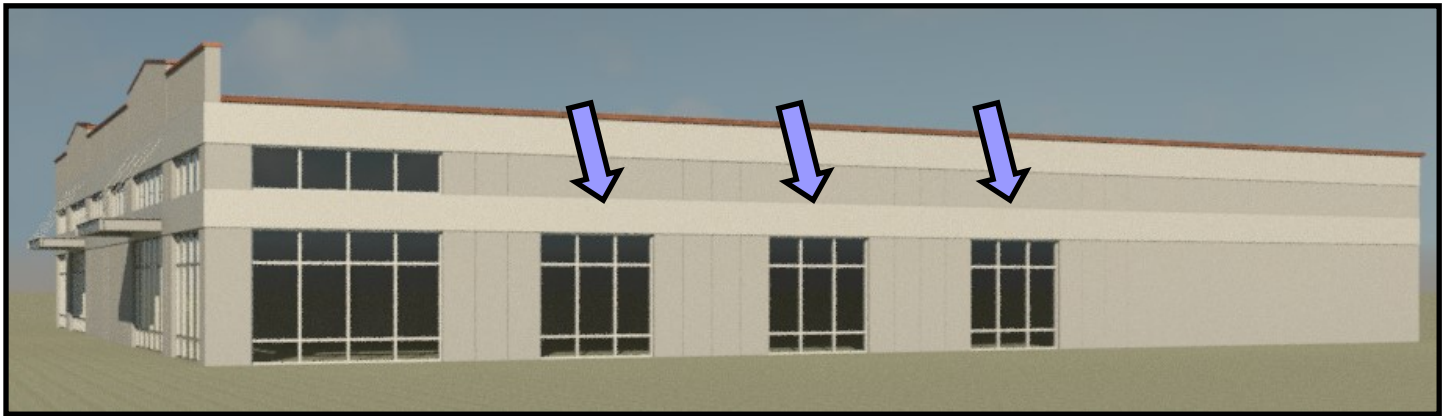
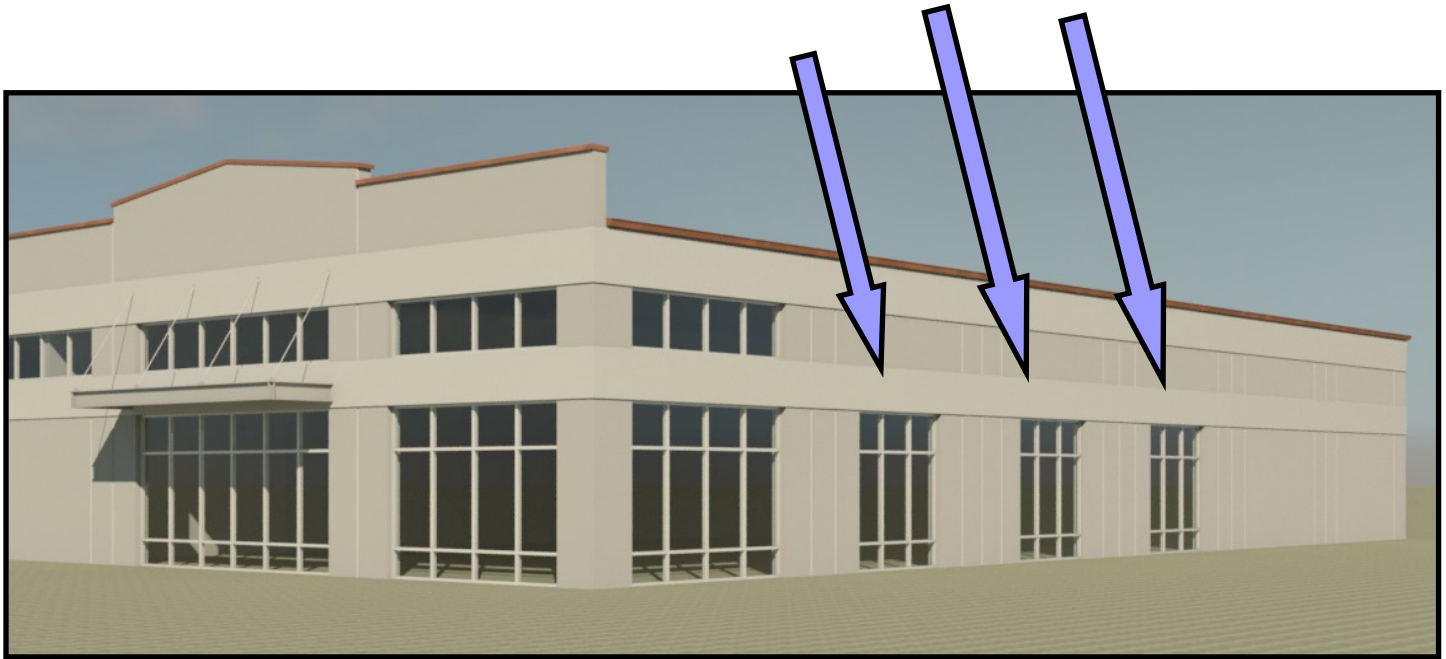


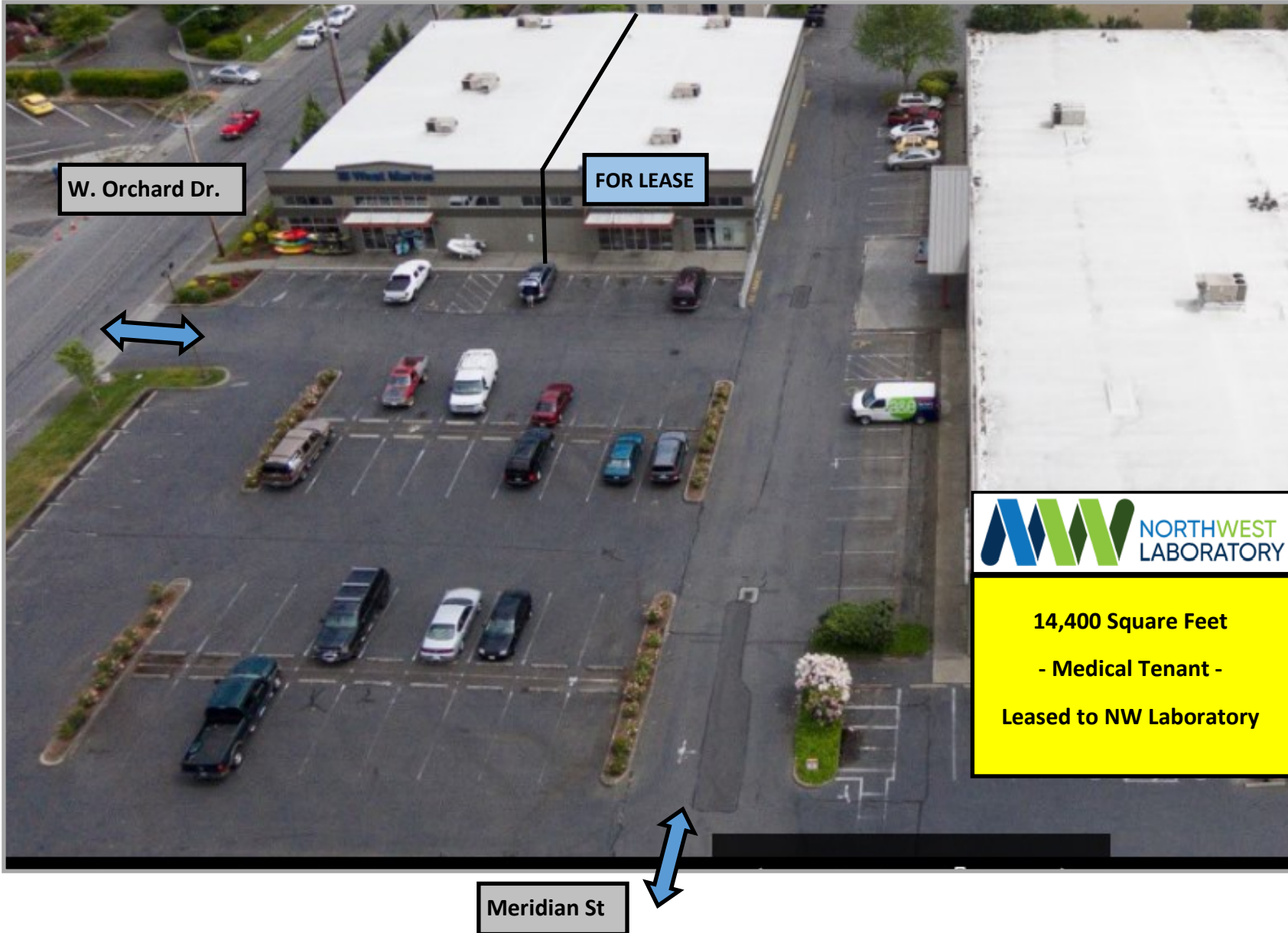
Contact

Greg Martineau, CCIM
 C (360) 820-4645
 Q (360) 676-4866
greg@saratogacom.com

Ideal for Medical & Dental Offices

(Architect's Renderings)
Windows can be added to the side of the building

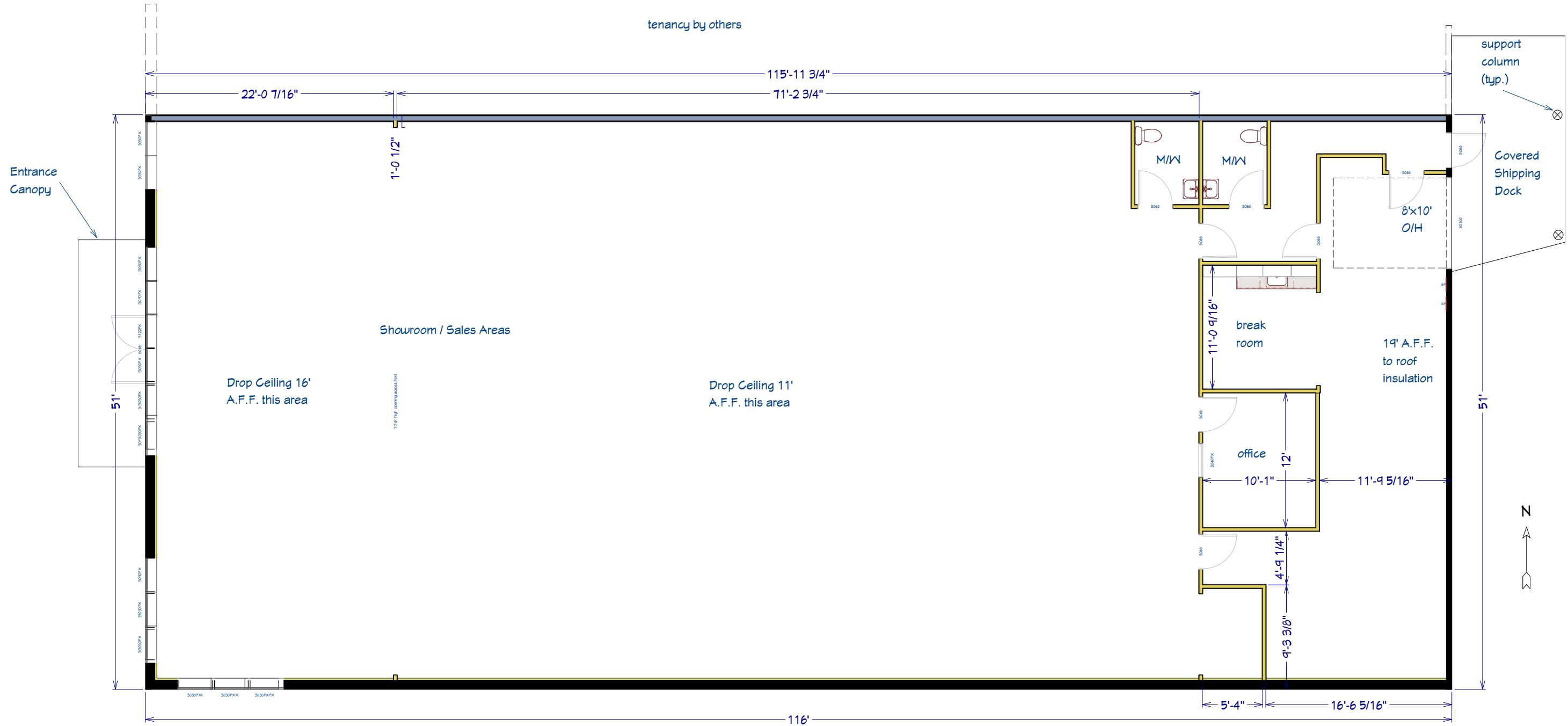






Floor Plan prepared 1/26/2018 for Eiford Company, Inc. for marketing purposes. Dimensions approximate; not intended for construction, architectural nor engineering purposes.

Real Estate Support Services LLC
 Lynden, WA 98264
 360-255-1477 RESLLC@gmail.com



Showroom / Sales Area = 4,124 sf
 Office & Break Room Area = 246 sf
 Restrooms, Hallways Area = 532 sf
 Warehouse Area = 650 sf

TOTAL AREA
 5906 SQ FT

As Built Floor Plan
 3560 Meridian St
 Bellingham, WA 98225